



Development Opportunities

Projected land uses range from commercial, retail, or industrial. Parcel sizes and zoning can be subject to change based on the needs of the developer. All lots will be fully serviced, which includes: water, sanitary, roads, and all franchise utilities (gas, electrical, and high speed broadband internet).



Business & Collaboration

Red Deer County's collaborative nature for business friendly initiatives was recognized by the Government of Alberta in 2021. The County was awarded a Certificate of Special Recognition for our Red Tape Reductions and Initiatives, which was based on our efforts and dedication to helping businesses succeed in the community.



Ideal Location

The Alberta government highlighted their commitment to invest \$15 million in the Red Deer Regional Airport expansion and the large project scheduled for the area. The available commercial land development has great exposure to roadway traffic, with close proximity to major markets and key transportation routes; making Springbrook South optimal for retail, commercial and industrial services.

COME GROW WITH US!

Springbrook South has over 85 acres of soon-to-be shovel ready commercial/industrial land located in the heart of central Alberta. Springbrook South is Red Deer County's newest subdivision, located in close proximity to the City of Red Deer and adjacent to Highway 2A. The prime location makes this land desirable for commercial, industrial and retail development in Red Deer County. These lands are located directly south of the Hamlet of Springbrook and west of the CP Railway and Highway 2A. Long-term visioning includes a mix of retail, commercial, and industrial businesses that will compliment the neighbouring municipalities and agricultural based industries.

Target Growth Sectors

- Value added agri-food
- Food processing & manufacturing
- Transportation & logistics
- Warehousing
- Professional scientific & technical services
- Data storage
- Renewable energy



Meet our Team



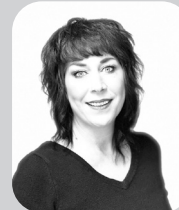
► Brad Koopmans
Land & Economic Development Manager
403.347.3367
bkoopmans@rdcounty.ca



► Ron Barr
Technical & Project Planning Manager
403.357.2390
rbarr@rdcounty.ca



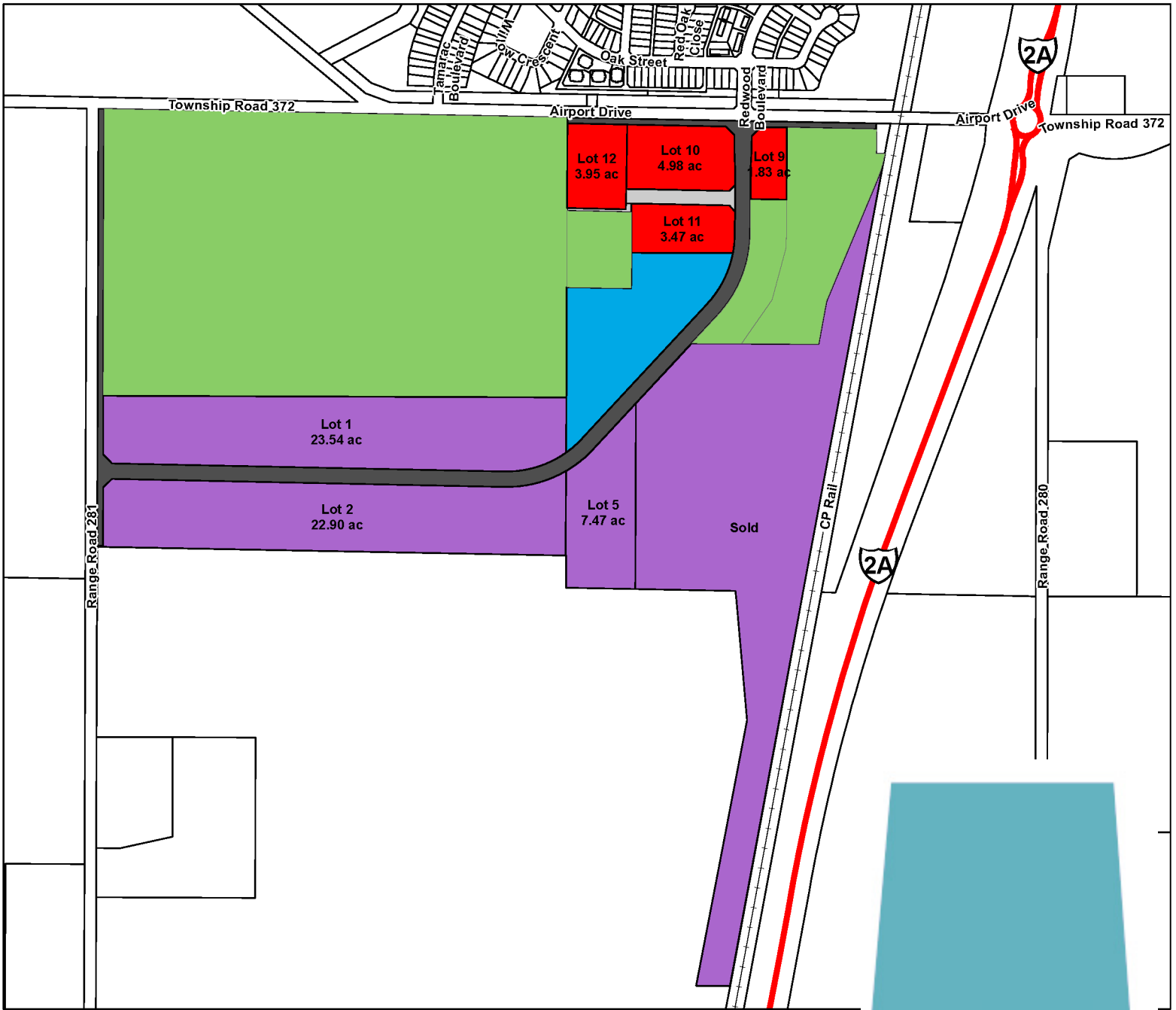
► Sandra Badry
Economic Development Officer
403.357.2395
sbadry@rdcounty.ca



► Tara Logan
Business Development Officer
403.357.2398
tlogan@rdcounty.ca



► Kellie Preszlak
Land Management Assistant
403.357.5392
kpreszlak@rdcounty.ca



Springbrook South Red Deer County

Existing and Proposed Parcel Layout/Status

Lots Starting @ \$300,000/acre

Future Land Use Concept



Public Open Space



Commercial



Industrial



Public Service



* All prices are in Canadian dollars and are subject to negotiations.

**Conceptual map only. Parcel sizes and zoning may be subject to change to suit the needs of the developer.

For more information connect with us at:



Red Deer County Centre
38106 Range Road 275
Red Deer County, AB T4S 2L9
403.350.2150



youtube.com/rdcounty



linkedin.com/reddeercounty



reddeercounty